



Federal Supply Group: Professional Services

General Services Administration (GSA)

Federal Acquisition Service

Authorized Federal Supply Schedule FSS Price List

Schedule Title: Multiple Award Schedule
Contract Number: GS-10F-0249X
Contract Period: May 18, 2011 to May 17, 2026

AMERICAN SOUTHWEST ICHTHYOLOGICAL RESEARCHERS, L.L.C.

Address: 800 Encino Place NE, Albuquerque, NM 87102-2606
Phone: (505) 247-9337
Contract Administration: Steven P. Platania
E-mail: steven_platania@asirllc.com
Web Address: www.asirllc.com
Business Size: Small Business

Price list current as of Modification No. PS-0032 Effective October 12, 2022

For more information on ordering go to the following website: <https://www.gsa.gov/schedules>.



On-line access to contract ordering information, terms & conditions, up-to-date pricing, and the option to create an electronic delivery order are available through GSA Advantage!®, a menu driven database system. The INTERNET address for GSA Advantage!® is: [GSAAdvantage.gov](https://www.GSAAdvantage.gov)



American Southwest
Ichthyological Researchers, L.L.C.

Table of Contents

Scope of Services	3
Customer Information	5
Hourly Rates	9
SCA Matrix	9
Travel Costs	9
Ancillary Equipment Use Daily Rates	10
Labor Categories and Descriptions	11
Ancillary Equipment and Support Products Descriptions	12
A Sampling of Past and Current Projects	13



American Southwest
Ichthyological Researchers, L.L.C.

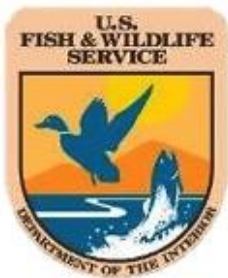
Scope of Services

American Southwest Ichthyological Researchers, L.L.C. (ASIR, LLC) is a small business founded in 1994 and dedicated to the study and conservation of native freshwater fishes. Our organization (ASIR, LLC) offers a unique suite of field, laboratory, and archival services; expert advice; assistance; guidance; or counseling to government agencies and private entities in need of fisheries or ichthyological research services.

SIN 541620/RC: Environmental Consulting Services

- Aquatic Surveys
- Distributional Surveys
- Egg, Fish, and Aquatic Invertebrate Sampling
- Threatened and Endangered Species Investigations
- Population Estimation
- Population Monitoring
- Taxonomic Analysis (adult fish)
- Ecological and Life History Investigations
- Early Life History (larval fish) Surveys
- Larval Fish Sampling, Identification, and Specimen Preservation
- Larval Fish Taxonomy
- Development of Larval Fish Identification Guides
- Expertise in Research Museum Curation and Techniques
- Entrainment and transport rates of fishes in canal
- Microchemical Analysis (ICPMS) of fish bony parts
- Fish Aging
- Otolith Analysis
- Fish Removal (non-native)
- Fish Database Development and Management

ASIR, LLC has provided consulting services for a variety of state and local agencies including:



— BUREAU OF —
RECLAMATION





American Southwest
Ichthyological Researchers, L.L.C.

Scope of Services

SIN 541370GIS/RC: Geographic Information Systems (GIS) Services

- Site Selection
- Habitat Mapping
- Database linked species distribution mapping

ANCILLARY/RC: Ancillary Supplies and Services

- GPS Field Units (Trimble-sub-meter accuracy)
- Fish Electroshocking Units
- Raft(s) and Associated Gear
- Portable Water Quality Measuring Equipment
- Stereomicroscope and multi-field polarized lighting
- Compound Microscope
- Microscope image capture and analysis software
- Honda 8.8 HP Outboard motors
- Marsh-McBirney portable velocity flow meter

ASIR, LLC works closely with several environmental programs and organizations including:





American Southwest
Ichthyological Researchers, L.L.C.

Customer Information

Contractor: American Southwest Ichthyological Researchers, L.L.C.
Phone: (505) 247-9337
E-mail: steven_platania@asirllc.com

Contract Administrators: Steven P. Platania
 Owner
 Phone: (505) 247-9337
 E-mail: steven_platania@asirllc.com

Mary Brandenburg
 Administrator
 Phone: (505) 247-9337
 E-mail: mary_brandenburg@asirllc.com

1a. Table of Awarded Special Item Number(s) (SINs)

541620/RC	Environmental Consulting Services
541370GIS/RC	Geographic Information Systems (GIS) Services
ANCILLARY/RC	Ancillary Supplies and Services
OLM/RC	Order-Level Materials (OLM)

1b. **Identification of the lowest priced model number and lowest unit price for that model for each special item number awarded in the contract. This price is the Government price based on a unit of one, exclusive of any quantity/dollar volume, prompt payment, or any other concession affecting price. Those contracts that have unit process based on the geographic location of the customer should show the range of the lowest price and cite the areas to which the prices apply. See Pages 9 and 10.**

1c. **ASIR, LLC is proposing hourly rates.** Descriptions of all corresponding commercial job titles, experience, functional responsibility and education for those types of employees or subcontractors who will perform services are provided. See Pages 9 and 11.

2. **Maximum Order:** \$1,000,000.00

3. **Minimum Order:** \$100.00



American Southwest
Ichthyological Researchers, L.L.C.

Customer Information

4. **Geographic Coverage (delivery area):** Domestic – Delivery within the 48 contiguous states, Alaska, Hawaii, Puerto Rico, Washington, D.C., and U.S. territories
5. **Point of Production:** Albuquerque, Bernalillo County, New Mexico 87102-2606
6. **Discount(s) From List Prices or Statement of Net Price:** GSA prices are NET prices
7. **Quantity Discounts:** None
8. **Prompt Payment Terms:** Net 30 days. Information for Ordering Offices: Prompt payment terms cannot be negotiated out of the contractual agreement in exchange for other concessions.
9. **Foreign Items:** None
- 10a. **Time of Delivery:** Delivery time to be specified on individual delivery/task order.
- 10b. **Expedited Delivery:** Contact contractor
- 10c. **Overnight and 2nd-day Delivery:** Contact contractor
- 10d. **Urgent Requirements:** In accordance with I-FSS-140-B Urgent Requirements (January 1994), when the Federal Supply Schedule contract delivery period does not meet the bona fide urgent delivery requirements of an ordering agency, agencies are encouraged, if time permits, to contact the Contractor for the purpose of obtaining accelerated delivery. The Contractor shall reply to the inquiry within 3 workdays after receipt. (Telephonic replies shall be confirmed by the Contractor in writing.) If the Contractor offers an accelerated delivery time acceptable to the ordering agency, any order(s) placed pursuant to the agreed upon accelerated delivery time frame shall be delivered within this shorter delivery time and in accordance with all other terms and conditions of the contract. Agencies may also contact the contractor's representative to affect a faster delivery.
11. **F.O.B. Point:** Destination



American Southwest
Ichthyological Researchers, L.L.C.

Customer Information

-
- 12a. **Ordering Address:** 800 Encino Place NE
Albuquerque, NM 87102-2606
Phone: 505.247.9337
E-mail: steven_platania@asirllc.com
- 12b. **Ordering Procedures:** See Federal Acquisition Regulation (FAR) 8.405-3.
-
13. **Payment Address:** 800 Encino Place NE
Albuquerque, NM 87102-2606
Phone: 505.247.9337
E-mail: steven_platania@asirllc.com
-
14. **Warranty Provision:** Contractor's Standard Commercial Warranty. All proposals, reports, and technical documents are reviewed by senior staff prior to being submitted to the client. After submission, client comments are addressed and when the client is satisfied a final report is produced and the final bill is submitted.
-
15. **Export Packing Charges:** N/A
-
16. **Terms and conditions of rental, maintenance, and repair (if applicable):** N/A
-
17. **Terms and conditions of installation:** N/A
-
- 18a. **Terms and conditions of repair parts indicating date of parts price lists and any discounts from list prices (if applicable):** N/A
- 18b. **Terms and conditions for any other services (if applicable):** N/A
-
19. **List of service and distribution points (if applicable):** N/A
-
20. **List of participating dealers (if applicable):** N/A
-
21. **Preventive maintenance (if applicable):** N/A



American Southwest
Ichthyological Researchers, L.L.C.

Customer Information

- 22a. **Special attributes such as environmental attributes (e.g., recycled content, energy efficiency, and/or reduced pollutants):** N/A
- 22b. **If applicable, indicate that Section 508 compliance information is available for the information and communications technology (ICT) products and services and show where full details can be found (e.g. contractor's website or other location.)**
ICT accessibility standards can be found at: <https://www.Section508.gov/>. N/A
23. **Unique Entity Identifier (UEI) Number:** D2HWGELRP584
24. **SAM Registration is current and active.**





American Southwest
Ichthyological Researchers, L.L.C.

Hourly Rates

SIN	Labor Category	Year 12 10/17/2022 to 5/17/2023	Year 13 5/18/2023 to 5/17/2024	Year 14 5/18/2024 to 5/17/2025	Year 15 5/18/2025 to 5/17/2026
541620/RC	Senior Biostatistician	\$201.99	\$208.05	\$214.29	\$220.72
	Senior Fisheries Biologist	\$111.09	\$114.43	\$117.86	\$121.40
	Fisheries Biologist II	\$80.81	\$83.23	\$85.73	\$88.30
	Fisheries Biologist I	\$65.66	\$67.64	\$69.66	\$71.75
	Fisheries Technician**	\$40.40	\$41.61	\$42.86	\$44.15
541370GIS/RC	GIS Specialist	\$111.09	\$114.43	\$117.86	\$121.40

**Indicates SCA-eligible category. See the following SCA Matrix for additional information regarding these labor categories.

All rates include 0.75% Industrial Funding Fee. They are fixed prices with an economic price adjustment escalation rate of 3% for contract years 12 through 15.

The Service Contract Labor Standards, formerly the Service Contract Act (SCA), apply to this contract and it includes SCLS-applicable labor categories. Labor categories and fixed price services marked with a (**) in this pricelist are based on the U.S. Department of Labor Wage Determination Number(s) identified in the SCLS/SCA matrix. The prices awarded are in line with the geographic scope of the contract (i.e., nationwide).

SCA Matrix

SCA Eligible Contract Labor Category	SCA Equivalent Code Title	WD Number
Fisheries Technician	23470 - Laborer	2015-5444

Travel Costs

The labor rates do not include travel and per diem costs (transportation, lodging, meals, and incidental expenses) associated with the SIN awarded. Travel costs will be reimbursed in accordance with federal clause C-FSS-370.



American Southwest
Ichthyological Researchers, L.L.C.

Ancillary Equipment Use Daily Rates

Equipment Used	GSA Rate Per Day
GPS Field Units (Trimble-sub-meter accuracy)	\$ 94.00
Fish Electroshocking Unit (backpack unit)	\$ 76.00
Raft and Associated Gear	\$ 117.00
Water Quality Measuring Equipment	\$ 14.00





American Southwest
Ichthyological Researchers, L.L.C.

Labor Categories and Descriptions

Labor Category	Category Description	Minimum Education/ Experience
Senior Biostatistician	Provides expertise in the project planning stages (e.g., experimental design, sample size considerations), data collection, choosing and implementing appropriate statistical methodologies, and interpreting results.	PhD/ 10 Years
Senior Fisheries Biologist	Prepares or reviews all proposals, reports, and other technical documents. Oversees or performs all aspects of research including design, data collection, data entry, database creation and management, and data analysis. Provides instruction and monitoring of personnel as needed.	MS/ 20 Years
Fisheries Biologist II	Prepares or reviews proposals, reports, and other technical documents. Oversees or performs all aspects of research including design, data collection, data entry, database creation and management, and data analysis. Provides instruction and monitoring of personnel as needed.	MS/ 10 Years
Fisheries Biologist I	Prepares proposals, reports, and other technical documents for review. Performs most aspects of research including design, data collection, data entry, database management, and data analysis. Instructs and oversees technicians.	BS/ 5 Years
Fisheries Technician	Assists with data collection and entry.	Entry Level
GIS Specialist	Compiles geographic data from a variety of sources including censuses, field observation, satellite imagery, aerial photographs, and existing maps for site selection, analysis, and inclusion in reports.	MA/ 5 Years
PhD = Doctor of Philosophy MS = Master of Science MA = Master of Arts		





American Southwest
Ichthyological Researchers, L.L.C.

Ancillary Equipment and Support Products Descriptions

Support Product	Description
GPS Field Units (Trimble-sub-meter accuracy)	Daily usage rate for a back-pack satellite based global positioning unit that will provide precise (within one meter) information (coordinates) on the location of the user every five seconds.
Fish Electroshocking Unit (backpack unit)	Daily usage rate for a Smith-Root LR24 backpack electrofishing unit that will be used to temporarily stun fish so that they can be collected for the study project.
Raft and Associated Gear	Daily usage rate for either 10' or 16' inflatable raft for transport on rivers and through whitewater rapids. Rate includes all gear necessary for safe transport, including raft frame, oars, straps for tie down, ropes, and safety equipment.
YSI Water Quality Measuring Equipment	Daily usage rate for Yellow Springs Instruments (YSI) that measure water quality parameters, including temperature, pH, conductivity, salinity, and dissolved oxygen.





American Southwest
Ichthyological Researchers, L.L.C.

A Sampling of Past and Current Projects

San Juan River Larval Fish Surveys –



Project conducted by ASIR, LLC for the past 17 years as part of the San Juan River Basin Recovery Implementation Program to quantitatively characterize and document spawning of native and nonnative fishes in the San Juan River. Project consists of five, week-long, field sampling events (monthly from April through August), using company-owned inflatable whitewater rafts, and includes gathering and recording habitat and water quality information using handheld multi-parameter water quality instruments; generation of site selection, habitat, and fish distribution maps using Trimble Ranger Handheld Data Collector GPS units, Pathfinder Office, ARCInfo GIS, and orthophotography images; laboratory larval fish identification; permanent archiving of field notes, photographs, and field-collected specimens at a university research museum; data entry and rigorous

statistical analysis; relational database creation and maintenance for analysis and archival purposes; generation of a final annual report prepared in a scientific format including summary tables and publication quality scientific graphs; and oral presentation of results provided to funding agencies, other resource management agencies, the general public, and the scientific community. **SIN 541620, 541370GIS, ANCILLARY**





American Southwest
Ichthyological Researchers, L.L.C.

A Sampling of Past and Current Projects



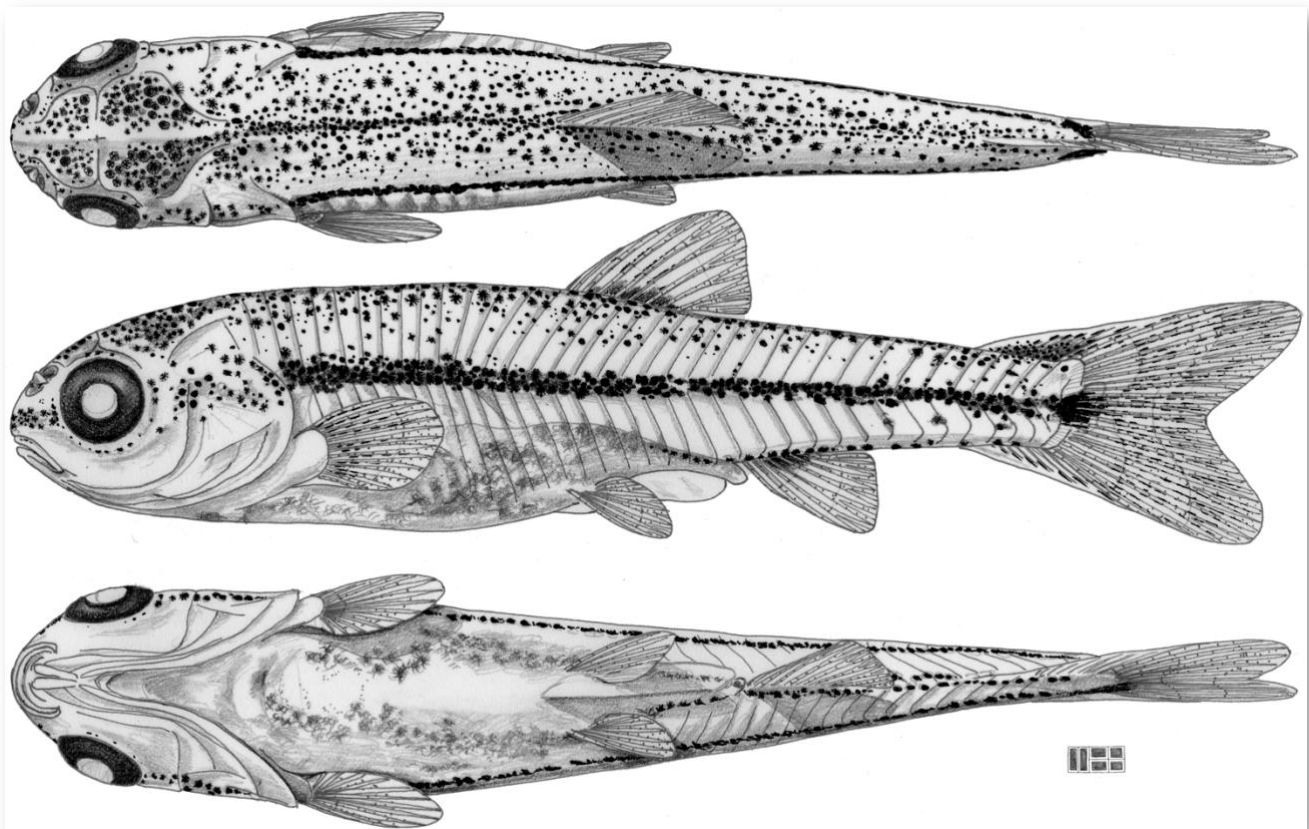
San Juan River Nonnative Fish Removal – Nonnative species monitoring and control program conducted as part of the San Juan River Basin Recovery Implementation program. ASIR, LLC provides field technicians multiple times per year to assist in multi-day collaborative efforts to collect, process, and remove nonnative fish from the river and collect data on all endangered fish captured. Fish are collected using inflatable rafts equipped with raft-mounted, generator-powered electrofishing gear. Field technicians participate in all aspects of the effort, including electrofishing and netting, rowing, fish identification, data collection, and fish tagging. **SIN 541620**



American Southwest
Ichthyological Researchers, L.L.C.

A Sampling of Past and Current Projects

Pecos River Larval Fish Developmental Guide and Identification Key – The purpose of this project was to provide researchers a detailed key to accurately identify cyprinid larvae and early juvenile fishes collected from the lower Pecos River. Sixteen native and non-native cyprinids, including four cyprinid species from the Texas portion of the Pecos River are included in this guide detailing cyprinid larvae of the Lower Pecos River, New Mexico and Texas. From hatchery-reared larval fish series, morphological development was characterized (using meristic, morphometric, and pigmentation characters) for cyprinid species in the lower Pecos River; eight accurate detailed scientific illustrations of the larval fish developmental stages for each species (three views [dorsal, lateral, and ventral]) were generated; and diagnostic characters to distinguish between species were identified and are presented. The descriptive species tables generated for this project follow larval fish guides previously produced by D. E. Snyder et al. (Colorado State University, Larval Fish Laboratory). **SIN 541620**





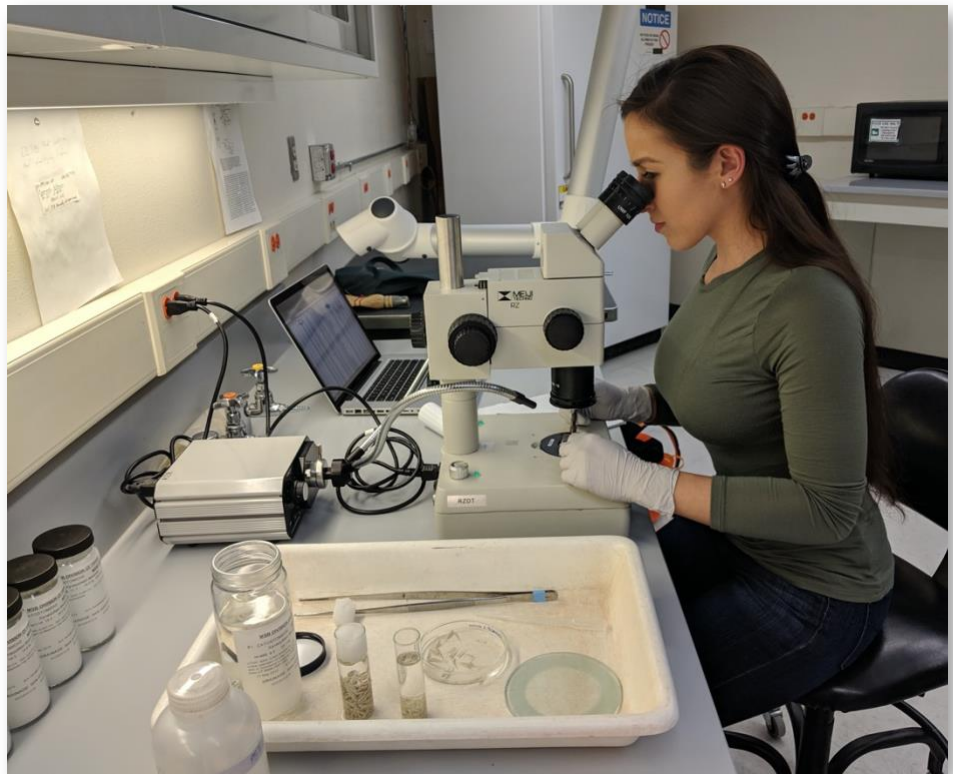
American Southwest
Ichthyological Researchers, L.L.C.

A Sampling of Past and Current Projects

Developmental Key for Rio Grande Silvery Minnow, *Hybognathus amarus* and Plains Minnow, *Hybognathus placitus* – Production of a dichotomous key of larval fish developmental stages to be used in a Middle Rio Grande Larval Fish Identification Guide. Project consists of describing the early ontogenetic life stages (protolarvae, flexion mesolarvae, post-flexion mesolarvae, metalarvae, and early juvenile) of Rio Grande silvery minnow, *Hybognathus amarus*, and plains minnow, *Hybognathus placitus*, using detailed descriptive morphometric, meristic and pigment characters developed by Darrel E. Snyder. Technical illustrations depicting dorsal, lateral, and ventral views of each individual life stage will accompany the descriptive key of each species.
SIN 541620

Rio Grande Silvery Minnow Age and Growth Determination – Study was designed to determine the ages of multiple size-classes of wild Rio Grande silvery minnow using otolith and scale aging techniques. Project consists of field sampling using backpack electrofishing gear; laboratory research; permanent archiving of otoliths and scales, field notes, photographs, and field collected specimens at a university research museum; data entry and rigorous statistical analysis; relational database creation and maintenance for analysis and archival purposes; generation of a final report prepared in a scientific format including summary tables and publication quality scientific graphs; and oral presentation of results provided to funding agencies, other resource management agencies, the general public, and the scientific community. Project was conducted in collaboration with Dr. Richard J. Horwitz at the Academy of Natural Sciences, Philadelphia.

SIN 541620, ANCILLARY





American Southwest
Ichthyological Researchers, L.L.C.

A Sampling of Past and Current Projects

Rio Grande Silvery Minnow Population Estimation – A thorough annual sampling protocol developed by ASIR, LLC is used to generate annual estimates of Rio Grande silvery minnow population during a single time period (October). This project employs a statistically rigorous sampling design for collection of habitat availability information as well as fish use data. The project consists of sampling for fish using back-pack electrofishing gear and a specially designed collection system; acquiring aquatic habitat information; recording water quality data using handheld multi-parameter water quality measuring instruments; data entry; relational database creation and maintenance for analysis and archival purposes; rigorous statistical design and analysis by our senior biostatistician; generation of site selection, habitat, and fish distribution maps using Trimble Ranger Handheld Data Collector GPS units, Pathfinder Office, ARCInfo GIS, and orthophotography images; generation of a final report and multi-year synthesis reports prepared in a scientific format which include maps, summary tables, and publication quality scientific graphs; and oral presentation of results provided to funding agencies, other resource management agencies, the general public, and the scientific community. **SIN 541620, 541370GIS, ANCILLARY**





American Southwest
Ichthyological Researchers, L.L.C.

A Sampling of Past and Current Projects



Rio Grande Silvery Minnow Spawning Periodicity (Monitoring) – Systematic monitoring of spatial and temporal spawning periodicity of Rio Grande silvery minnow conducted by ASIR, LLC since 1999 to enable characterization of the timing, duration, and magnitude of Rio Grande silvery minnow reproduction in the Middle Rio Grande for assessment of spatial and temporal differences in spawning effort. Project consists of daily field sampling of drifting fish eggs using Moore Egg Collectors (sampling device developed by ASIR, LLC that provides means to acquire repeatable and quantitative collection of eggs [without damaging the eggs]) equipped with devices that record volume of water sampled, data entry, relational database

creation and maintenance for analysis and archival purposes, rigorous statistical analysis, permanent archiving of field notes and any field collected specimens at a university research museum, generation of a final report prepared in a scientific format including summary tables and publication quality scientific graphs, and oral presentation of results provided to funding agencies, other resource management agencies, the general public, and the scientific community. **SIN 541620**



A Sampling of Past and Current Projects

Rio Grande Silvery Minnow Population Monitoring – Systematically conducted population monitoring of Rio Grande silvery minnow and the associated Middle Rio Grande ichthyofaunal community to provide the foundation necessary to assess recent temporal and spatial trends in fish populations in response to environmental phenomena and management actions. This project has been conducted by ASIR, LLC since 1993. Project consists of systematic field sampling conducted nine times per year at twenty selected sites; acquiring aquatic habitat information; recording water quality data using handheld multi-parameter water quality measuring instruments; lab identification of larval fish; permanent archiving of field notes, photographs, and any field collected specimens at a university research museum; data entry and rigorous statistical analysis; relational database creation and maintenance for analysis and archival purposes; generation of a final annual report prepared in a scientific format including summary tables and publication quality scientific graphs; and oral presentation of results provided to funding agencies, other resource management agencies, the general public, and the scientific community. **SIN 541620, ANCILLARY**

Black River (Black River is only in NM; Delaware River is in NM and TX) Fisheries Survey and Habitat Assessment – A survey was performed in the Black River and its tributaries in southeastern New Mexico to determine the current composition, distribution, and relative abundances of fishes and aquatic habitats. Survey consisted of one field sampling event using small mesh seines, fish traps, and back-pack electrofishing gear; acquiring aquatic habitat information; recording water quality data using handheld multi-parameter water quality measuring instruments; laboratory larval fish identification; preparation of radiographs (=x-rays) of catfish to determine identities of cryptic species and provide osteological information for future investigations; permanent archiving of field notes, photographs, and field collected specimens at a university research museum; data entry and rigorous statistical analysis; relational database creation and maintenance for analysis and archival purposes; generation of a final report prepared in a scientific format including publication quality summary tables and scientific graphs, and a thorough review of published and unpublished literature on fishes and aquatic habitats of the Black River; and oral presentation of results provided to funding agencies, other resource management agencies, the general public, and the scientific community. **SIN 541620, ANCILLARY**



American Southwest
Ichthyological Researchers, L.L.C.

A Sampling of Past and Current Projects

Determining Spawning Periodicity of

San Juan River Suckers –

This study documented reproductive ecology and early life history of Bluehead and Flannelmouth Suckers by determining spawning periodicity and growth rates, investigating relationship between fish length and daily age, and examining the impacts of growing degree–days (GDD) on growth rates and spawn dates. Otoliths from larval suckers (collected weekly from nursery habitat in the San Juan River) were extracted, mounted on



microscope slides and microscopically examined so age (in days) could be determined. Otolith age was used to calculate daily growth rates, hatch dates, and spawn dates and to develop a growth curve to describe the relationship between age and body length. Growth curves (logistic, von Bertalanffy, and Gompertz) were evaluated with Akaike's Information Criterion for best fit. Growing degree–days were used to determine the impact of thermal accumulation on growth rates and spawn dates. **SIN 541620**

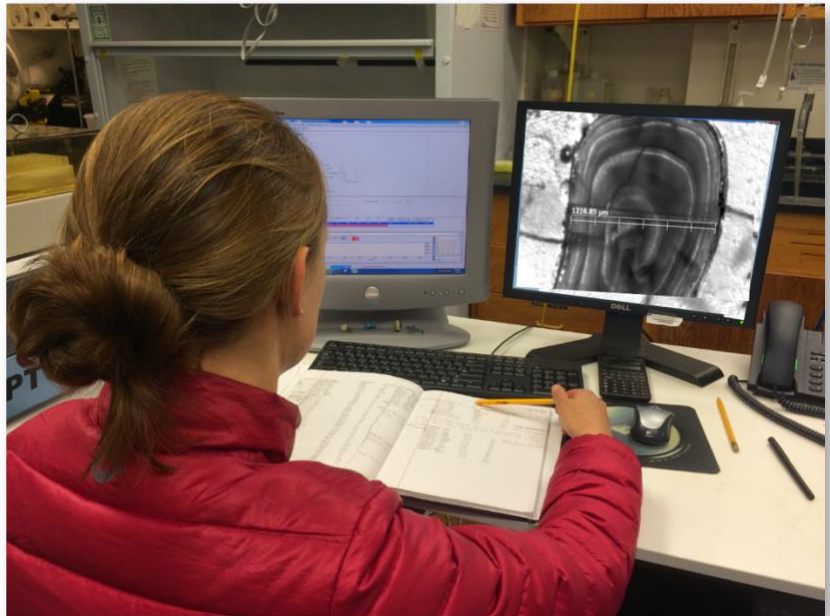




American Southwest
Ichthyological Researchers, L.L.C.

A Sampling of Past and Current Projects

Determining Natal Origin of Razorback Sucker – Although adult Razorback Sucker are frequently found in the San Juan River, they are assumed to be hatchery reared fish that have lost their PIT tag rather than wild spawned individuals that have recruited to the adult population. Microchemical analysis was used to determine natal origin of these fish and determine if untagged fish were naturally produced in the San Juan River. Fin rays and otoliths were collected from Razorback Sucker for microchemistry analyses and compared to fin ray/otolith microchemical signatures of hatchery populations. Both isotopic and elemental microchemical signatures are generated from Laser Ablated (LA) samples with ablated material being analyzed using Inductively Coupled Plasma Mass Spectroscopy (ICPMS) technology. Linear discriminant function analysis of the processed data is performed to accurately classify the natal origin of individual samples; thus, LA-ICPMS is used to discriminate hatchery of origin in untagged Razorback Sucker. Microchemical analysis allows differentiation of multiple fish populations and in many cases is a “natural tag”. **SIN 541620**





American Southwest
Ichthyological Researchers, L.L.C.

A Sampling of Past and Current Projects

Larval Marine Fish Identification – ASIR, LLC’s Senior Larval Fish Taxonomist has over 40 years of experience and is a recognized world-wide expert in identification of early life stages of marine demersal and coastal pelagic fishes; ocean pelagic, mesopelagic, and deep-sea fishes; and reef and mangrove associated species. He has provided quality control and verification of species identification for numerous federal and state agencies, and over 30 national and international university researchers. These skills allow ASIR, LLC to process samples and identify larvae from plankton collections taken throughout the Gulf of Mexico, Atlantic, Indian, Mediterranean, and Pacific Oceans, especially fishes of commercial, recreational, and/or aquaculture interest. **SIN 541620**

